

FOLIO Acquisitions: Tips & Tricks for Maximizing Workflows

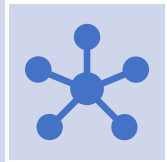
Customization in FOLIO Acquisitions

Braegan Abernethy
Department Head for Resource Acquisitions
babernethy@gsu.edu





Agenda



Fund groups



Expense classes



Custom fields in Purchase Orders and Purchase Order Lines



Fund Group Ideas



Fund source (state v. endowment)



Order type (firm, ongoing, standing order)



Subject/College/Collection Area



Material type (book, journal, database, streaming media)

Expense Classes

^ Budget information

Name

AFRICAHIST-FY2025

Status ^{*}

Active

Allowable expenditure

100

Allowat

100

^ Expense classes

[Add expense class](#)

- Configured in Settings>Finance>Expense Classes
- Track spending by defined categories within a fund
- Enables tracking and reporting by the classes defined
- In order & invoice creation, both the fund and the expense class can be selected
- Added at the budget level in a fund



Expense Class Ideas



Requestor (collection development, subject librarian, faculty)



Order type (firm, ongoing, standing order)



Subject/College/Collection Area



Material type (book, journal, database, streaming media)

Custom Fields

- Track additional information in the Purchase Order and Purchase Order Line
- Available as search and filter options in the Orders app

Custom fields	
Accordion title	
Custom fields	
^ Perpetual · Multi-select	
Field label	Required
Perpetual	No
Label	
Non-Perpetual	
Perpetual	
^ Order Note · Text area	
Field label	Required
Order Note	No

Custom fields	
Accordion title	
Custom fields	
^ Date Requested · Date picker	
Field label	Required
Date Requested	No
^ Access Note · Text area	
Field label	Required
Access Note	No



Custom Field Options

Add custom field ▲

- Checkbox**
- Date picker**
- Multi-select**
- Radio button set**
- Single select**
- Text area**
- Text field**

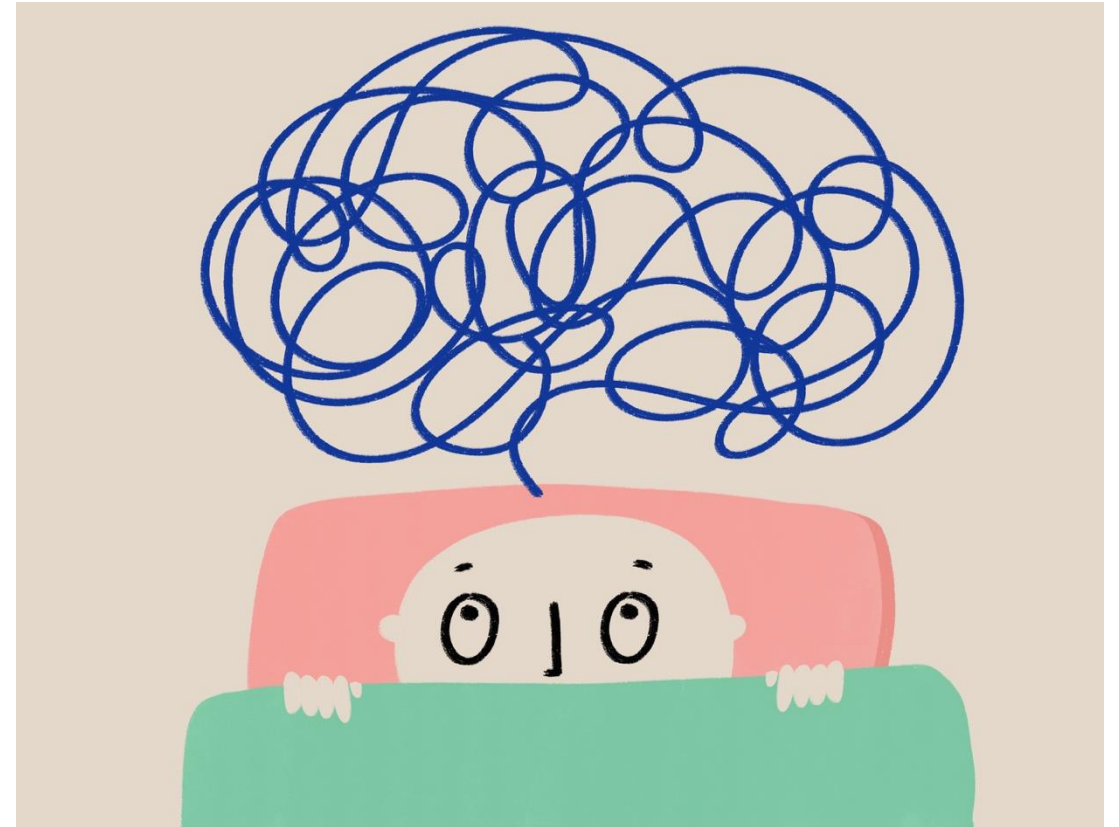


Searching & Filtering

- Purchase Orders
 - Custom fields (including text fields)
- Purchase Order Lines
 - Custom fields (including text fields)
 - Expense classes
- Export results in .csv

Considerations

- What do you want to track?
- Is there order data you tracked in Alma that you want to replicate in FOLIO?
- Expense classes cannot be deleted if assigned to a budget.





Questions/Ideas?